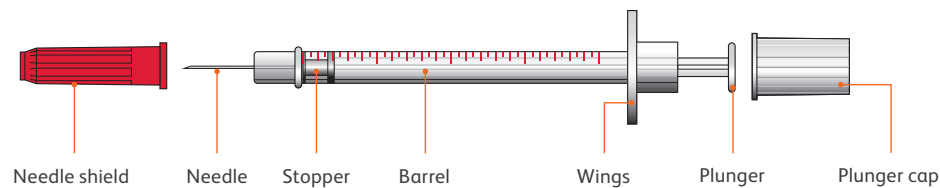
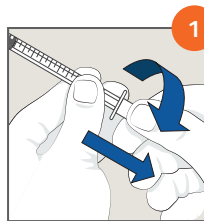


U-40 veterinary insulin syringes

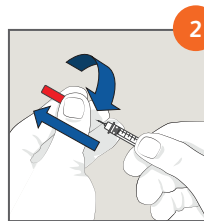
Parts of an insulin syringe



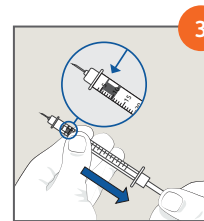
How to prepare the injection



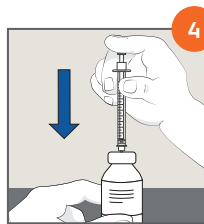
- 1** Wipe the top of the insulin bottle. Arrange your supplies. Wash your hands. **To expose the plunger, twist the white plunger cap then pull it off.**



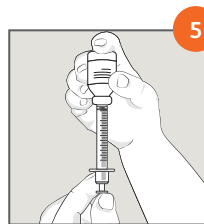
- 2** To expose the needle, **twist the red needle shield then pull it straight off**, being careful not to bend the needle or let the needle touch anything.



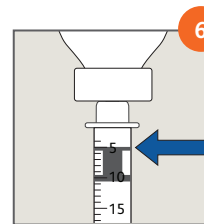
- 3** **Pull the insulin syringe plunger down; align the thin black line of the plunger (closest to the needle) with the desired number of units on the insulin syringe.** You need air in the insulin syringe equal to the amount of insulin your pet will take.



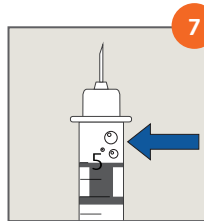
- 4** Hold the insulin syringe like a pencil. Push the needle straight through the center of the rubber top of the insulin bottle and **push the plunger down completely.**



- 5** Leave the needle in the insulin bottle. Carefully **turn the bottle and the insulin syringe upside down** so the bottle is on top.



- 6** Pull the plunger down slowly. Align the thin black line of the plunger (closest to the needle) with the **desired number of units** on the insulin syringe.



- 7** **If air bubbles appear in the insulin syringe, inject the insulin back into the vial.** Then redraw the insulin following steps 5 and 6.



- 8** You are now ready to give the insulin injection to your pet.

How to administer insulin to cats or dogs

Follow these steps to safely administer insulin to your pet^{1,2}

- 1 Unless otherwise directed by a veterinarian, feed the cat or dog before giving insulin.
- 2 Find a good location to inject your pet (Figure 1). Insulin injections should be given just under the skin. Many pets tolerate the injections well when given one to two inches from the middle of the back, near the shoulder blade or hip bone. Be sure to rotate injection sites each time you give an injection to avoid soreness.
- 3 If necessary, ask someone to help you hold your pet. Some pets will stay still without being held if they are distracted with low-carbohydrate treats. It may help to inject your pet while they are eating.
- 4 Hold the syringe in your dominant hand. To keep from losing any of your pet's insulin, do not place your finger on the plunger until the needle is in the skin.
- 5 Using your other hand, pinch a fold of skin and gently insert the needle into the center of the fold (Figure 2).
- 6 Once the needle is through the skin, gently push the plunger down until the full dose has been delivered.
- 7 Carefully remove the needle from the skin and safely dispose the syringe and needle in a sharps container.
- 8 Be sure to treat your pet with something he/she enjoys, such as playtime, snuggles, or a low-carb treat.

Contact your veterinarian if:

- Your cat or dog doesn't eat, eats less than normal, or vomits soon after eating
- Your cat or dog seems lethargic, wobbly, or sleepy prior to giving insulin

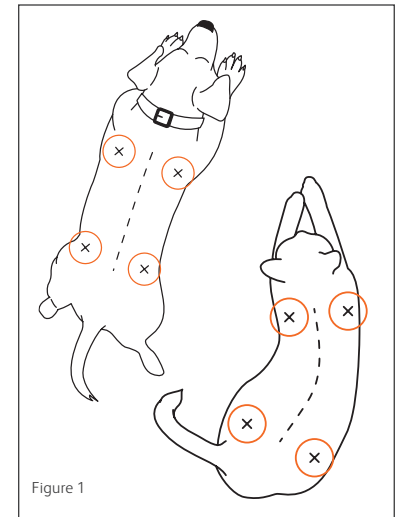


Figure 1

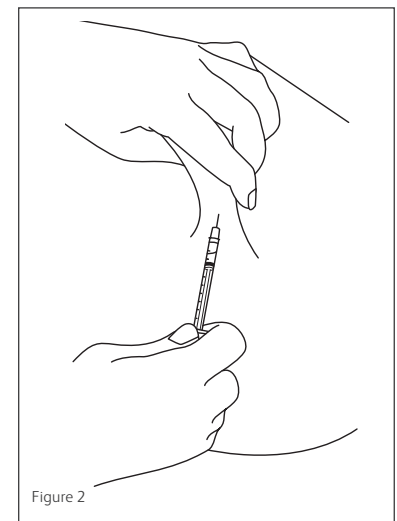


Figure 2

Contact your physician if you accidentally inject yourself with your pet's insulin as it can lower your blood sugar as well.

1. How to Administer Insulin to Your Dog. AAHA. https://www.aaha.org/public_documents/guidelines/diabetes_insulin_dog_final.pdf. Accessed February 13, 2019.

2. How to Administer Insulin to Your Cat. AAHA. https://www.aaha.org/public_documents/guidelines/diabetes_insulin_cat_final.pdf. Accessed February 13, 2019.

BD, 1 Becton Drive, Franklin Lakes, NJ 07417, U.S.

bd.com

