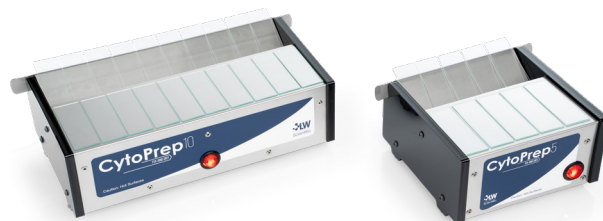


# CytoPrep Fix & Dry

The Jorgensen Laboratories CytoPrep is a combination device that safely heat-fixes cytologies and quickly dries slides for rapid microscopy results.

Heat-fixing cells onto slides, especially when preparing ear cytologies or drying a urine slide before staining, is the best way to ensure that cells adhere flat onto the glass and fully accept stains with minimum wash-off. The traditional method of heat-fixing slides with a bunsen burner or lighter is considered too dangerous by many clinics, because of safety concerns of an open-flame, and is also inconsistent because of poor temperature control. Open flames also create black soot on the slide which must be wiped off prior to staining. The CytoPrep eliminates these concerns with a controlled warm surface that can accommodate up to 5 or 10 slides for rapid heat-fixing in as little as 1 minute.

After slides are heat-fixed then stained and rinsed with water, the slides need to dry before viewing under the microscope. The traditional methods of propping up slides for 15 minutes of air drying or using a hair dryer when the case is urgent and critical, are inefficient, cumbersome, and cluttered. The CytoPrep can dry up to 5 or 10 slides in a minute using a warm gentle air stream, while slides rest in the removable, washable slide rack. The CytoPrep is the most efficient and convenient combination cytology prep device available, saving time, saving valuable counter-space, and improving results in the laboratory.



Designed, Engineered &  
Assembled Proudly in America

*Patent Pending*

## SPECIFICATIONS

5 and 10 slide capacity  
Front platform heats to 120°F (+/- 5°)  
The rear drying rack heats air to 100°F (+/- 5°)  
Heat-fixes ear cytologies in 1 minute  
Dries smears in 30 seconds  
Dries rinsed slides in 1 minute

## CONSTRUCTION

Stainless steel surfaces  
Removable rear drying rack  
Ultra-quiet fans for silent drying

## POWER

Input: 100-240V, 50/60Hz  
Output: 12VDC/8Amp

## CYTOPREP 10

**Unpacked:**  
3.75 x 6.25 x 12.5in  
Weight: 4.5lbs (2.04kg)

**Packaged:**  
8 x 10 x 16in  
Weight: 5lb (2.27kg)

## CYTOPREP 5

**Unpacked:**  
3.75 x 6.25 x 6.25in  
Weight: 2.5lbs (1.13kg)

**Packaged:**  
8 x 8 x 6in  
Weight: 3lb (1.36kg)

## CytoPrep Fix & Dry

Model #	Description
J0334CP10	10-slide cytology prep station
J0334CP5	5-slide cytology prep station

- Designed, engineered, and assembled in the USA
- Time saving and efficient
- Capacity: 5 and 10 Slides

**CytoPrep**  
FIX AND DRY



**PENNVET**  
SINCE 1981

**Veterinary Supply, Inc.**

Phone: 800.233.0210

[www.pennvet.com](http://www.pennvet.com)

**JorVet**

P 770.270.1394  
F 770.270.2389

865 Marathon Parkway  
Lawrenceville GA 30046

[LWScientific.com](http://LWScientific.com)

## Ear Cytologies

### SMEAR



Make a thin smear.

### FIX



1 MIN



Set on the heated front platform for 1 minute or until visibly dry.

## Urinalysis

### APPLY



Deposit sediment.

### FIX



2-4 MINS



Set on the heated front platform for 2-4 minutes or until visibly dry.

## Blood / Aspirates

### SMEAR

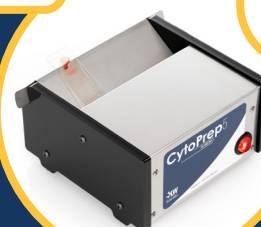


Make a thin smear.

### DRY



30 SECS



Place slide on the rear drying rack for 30 seconds or until visibly dry.

WARNING - Do not heat fix blood smear using the heated platform as this will result in crenation of the cells.

### STAIN



Dip specimen into the stain.

### RINSE



Rinse the specimen.

### DAB



Dry rear of slide with a paper towel. Tap and dab all edges to remove excess water.

### DRY



1 MINUTE

Set on the drying rack for 1 minute or until visibly dry.

WARNING - Do not dab the top surface of the slide as this will result in the removal of the sample.